



GOT A GREEN THUMB? GET EXCLUSIVE GARDENING REBATES THROUGH LTWD



If you're a gardening buff, you know there's no such thing as thinking about spring planting too early. As winter fades and the ground thaws, warm weather and spring showers can come on quickly, so it's essential to have your seedlings rooted in pots or the ground before the season sneaks up on you.

This year, plan your plant selection well ahead of time with help from our friends at Plant Select!

Plant Select is a nonprofit collaboration between Colorado State University, Denver Botanic Gardens, and The Horticulture

Industry that focuses on providing species of plants that flourish in the kinds of high plains and inter-mountain regions common in Colorado. Ultimately, their goal is to help budding horticulturalists choose plants that:

- Need minimal water to grow large, strong, and beautiful
- Are hardy enough to withstand the climate in a diverse range of geological regions
- Are resistant to disease and insects
- Are non-invasive and meld seamlessly into new landscapes, rather than overtaking other plants

If you want to see Plant Select's work in action, you can visit any one of their demonstration gardens across Colorado. And, if you like what you see, you can use the LTWD's Water-Saving Plants Rebate Form to claim up to \$250 off your purchase of water-saving plants from local nurseries and garden centers. Make sure you save your receipt!

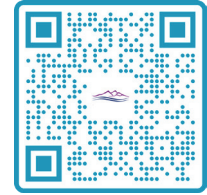


Resource-friendly, resilient plants are only the beginning of a waterwise garden. Any green thumb worth their weight in potting soil knows that landscaping, irrigation, and other similar tasks are half the fun of gardening! At LTWD, we realize this as well and want to make these services more accessible to our customers by:

- Offering free sprinkler consultation through Resource Central's Slow the Flow program where they'll audit your current home irrigation setup and suggest areas for water-wise improvements
- Providing free consultations for lawn removal and up to \$750 in rebates for replacing 200 square feet of grass with water-wise vegetation

- Giving rebates for a variety of other water-wise gardening choices, such as soil amendment and smart irrigation
- Holding routine giveaways for key waterwise gardening tools—such as arbor bags, soaker hoses, and nozzles—on the LTWD Facebook page

Many of these rebates operate on a first-come, first-served basis, so don't wait until spring to get in on the action. Visit our conservation page via the QR code for more information about saving water and tapping into Little Thompson Water District's rebate programs.



MAKE THE MOST OUT OF EYEONWATER

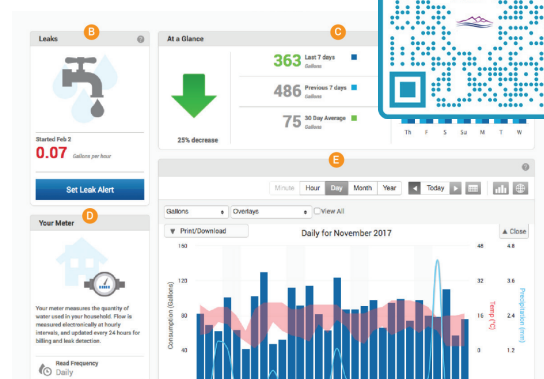
If you recently signed up for EyeOnWater you might be wondering what to do with the information you now have available to you right at your fingertips. There are three cool things you can do with EyeOnWater that will make it simpler for you to keep tabs on your water habits.

- **Track your water consumption in real-time across hourly, daily, weekly or monthly intervals.** Through EyeOnWater you have direct, real-time access to your water consumption data giving you the power to track your usage trends as well as identify any abnormalities that may indicate a leak.
- **Receive water leak alerts via SMS.** Did you know that not all leaks are visible? There are a lot of “silent leaks” that can occur throughout your home that not only waste water but are also costly. EyeOnWater will identify sudden peaks in your usage, letting you know quickly that there could be a problem. Because you'll know about leaks sooner, you can get them fixed saving you water and money on your monthly LTWD bill.
- **Identify and measure your conservation efforts.** Knowing when your home is using the most water can help you find ways to conserve. For example, if your water usage spikes in the summer you might want

to consider some outdoor conservation efforts such as adjusting your sprinkler system or removing turf. From there you can then track how your conservation efforts are impacting your water usage week-over-week, month-over-month and year-over-year.

If you haven't signed up for EyeOnWater yet, don't delay! It's free and easy to enroll.

To use EyeOnWater, simply access the site using the QR code below or download the app from the Apple or Google Play Store. Then, input your zip code and account number (minus the period). You'll gain instant access to usage metrics, as well as other insightful information that can help you better understand your water habits so that you can make adjustments to lower your bill.



A REMINDER ABOUT UPDATED RATES IN 2024



While the LTWD always strives to deliver clean, affordable water to all our customers, the prices of essentials, such as labor, supplies, and equipment, have risen significantly over the past year. In order to continue fulfilling our mission of delivering the same high-quality water to our customers, we've had to increase our rates.

Rate increases aren't viewed favorably here at LTWD—nor are they taken lightly. Nonetheless, they're necessary to keep the taps flowing in 2024 and beyond.

Rest assured, we work for you and every other customer in Boulder, Larimer, and Weld Counties, and we want to be clear that 2024's rate increase is solely to match our treatment and distribution costs, not to turn a profit or invest in other endeavors. Your payments will go toward repairing and replacing aging pipes, pump stations and tanks; maintaining and upgrading equipment; and providing excellent customer service.

At LTWD, we're committed to delivering the highest quality water at the lowest possible costs, and that will remain our goal for this year, 2025, and the rest of the foreseeable future.

STAY UP-TO-DATE ON 2024'S WATER CONTINGENCY SHORTAGE PLAN



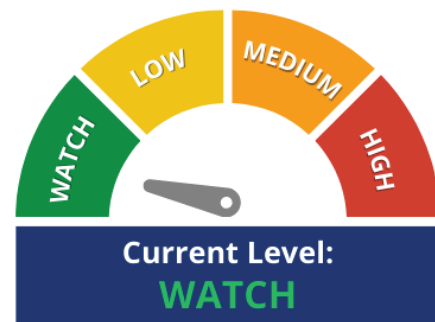
This winter we are sustaining the WATCH level of our Water Shortage Contingency Action Plan. Even during the winter, it's important to continue watching your water usage habits while we all work together to conserve this precious resource.

As a reminder, here are the guidelines within the WATCH level of the plan:

- Only water plants before 10AM or after 6PM
- For trees and bushes, only water via drip system, hand watering with a shutoff nozzle, deep root needle, or arbor bag
- Use a shutoff nozzle when washing your vehicle
- Whenever possible, use dry methods when spraying impervious surfaces, such as walls, fences, and sidewalks

We encourage all customers to review the complete Water Shortage Contingency Plan, and if you're interested in how different levels of water shortage affect your usage, you can print out a handy chart on our website, just scan the QR code above.

WATER CONTINGENCY PLAN ACTION LEVEL



WORKING TO MAINTAIN SAFE, RELIABLE, GOOD TASTING WATER

Our work is never done when it comes to water treatment and delivery. Our team is always working on maintaining and replacing our infrastructure to ensure we can continue to provide clean, high-quality water to our customers. This year, we worked on two significant projects which we're excited to share with you.



Twin Mounds Tank Rehabilitation: The District has a 5 million gallon potable water storage tank that serves the northeast quadrant of our water distribution system. The tank was originally constructed in 1998 and after 25 years of service required significant rehabilitation and recoating of the interior, along with moderate rehabilitation and recoating of the exterior. Over the last three years, our team restored the interior ceiling system, including select beam replacement, sandblasting, priming and epoxy coating; rehabbed the exterior including robotic

sandblasting, priming and urethane finish coating' and installed a new vent system and access hatch. The project was completed in October 2023 and will extend the service life of the tank by approximately 25-30 years.

Chimney Hollow Reservoir Project: The Chimney Hollow project is led by Northern Water and is a collaboration between 12 northeastern Colorado water providers to improve the reliability of water supplies from the Windy Gap Project. LTWD joined as one of these partners in 2003 to stabilize our water supply in drought years through the storage of additional water in wet years. The reservoir will be located just west of Carter Lake and will provide dedicated storage to supply 30,000 acre-feet of water each year. Construction started in August 2021 and is expected to last four years. See the latest developments of the project, including weekly progress time-lapse images at www.northernwater.org/CHRP



WE WANT TO HEAR FROM YOU! COMPLETE OUR CONSERVATION PROGRAMS SURVEY

The LTWD is always looking for new ways to help our customers learn more about saving water. So, we're conducting a survey regarding our conservation programs, and we want your input!

If you have any keen ideas for future initiatives or want to voice your opinion about our current programs, fill out this quick form. We're eager to hear from you and continue to provide the best service possible.



SURVEY HERE